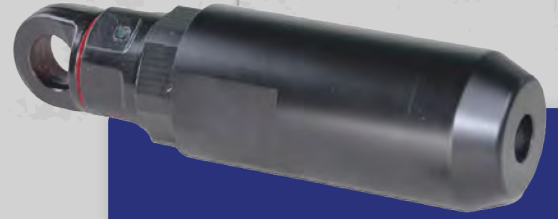


SPLITTER AND PULLER HEADS

ACME PULLER HEAD 533-081
Fits to MAX 7/16 Pulling Cable



PIPE SPLITTING VS. PIPE PULLING

ACME provides splitting or pulling head options to ensure unmatched flexibility. Our heads are tailored to fit host lateral pipe sizes ranging from 5/8" to 2" and host pipe materials made of lead, copper, galvanized, and plastic.

When utilizing the trenchless method, you will choose between two methods: Pipe Pulling or Pipe Splitting. The method you choose will be based on the host pipe material, the host lateral length, and your previous experience in that region.

RECOMMENDED METHODS BY PIPE TYPE

| REPLACING | RECOMMENDED METHOD | TOOL |
|------------------------|--------------------|--------------------------------------|
| Lead Water Lines | Split or Pull | 1-Blade Splitter Head or Puller Head |
| Plastic Water Lines | Split | 3-Blade Splitter Head |
| Galvanized Water Lines | Pull | Puller Head |
| Copper Water Lines | Split or Pull | 1-Blade Splitter Head or Puller Head |

LUBRICATION FOR SPLITTING

For successful splitting, lubricate the entire interior length of the host pipe before pulling. Use vegetable oil or liquid dish soap to reduce friction and binding.

Best Method: Use the ACME Suction Machine.

The machine's high suction pulls the lubricant through the entire length of host pipe, enabling a smooth split.

Without lubrication, friction between the host pipe's inner scale and the Splitter Head may cause binding, reverting the splitting process into a pulling process.

WHEN TO CHOOSE PIPE PULLING

- **Best for:** Short pulls, in compressible, moist, clay rich, and sandy soils. Typical method for replacing lead, galvanized or copper.
- **Process:** The entire length of the host pipe is removed.
- **Tool:** Puller Head

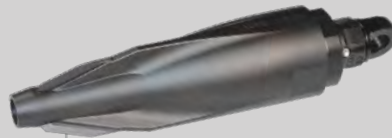
WHEN TO CHOOSE PIPE SPLITTING

- **Best for:** Long pulls in dry, gravelly, and low-compressible soil. Typical method for replacing lead or plastic pipes.
- **Process:** The host pipe is split in place using a single or triple blade splitter head.
- **Advantage:** May require less pulling force since the host line does not need to break loose. May prevent the "wad" when pulling lead.
- **Tool:** 1-Blade or 3-Blade Splitter Head

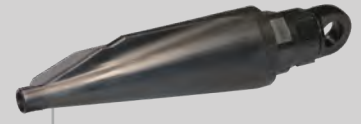
ACME SPLITTER HEAD 546-372
Fits to MAX 9/16 Pulling Cable



SPLITTER HEADS AND PULLER HEADS



ACME SPLITTER HEAD 546-351
Fits to MAX 9/16 Pulling Cable



ACME SPLITTER HEAD 533-121
Fits to MAX 7/16 Pulling Cable

LEAD AND COPPER SPLITTING HEADS

| CABLE END | PART # | CABLE SIZE | 5/8" LEAD | 3/4" LEAD | 1" LEAD | 3/4" COPPER | 1" COPPER | CUTTING BLADES | NOSE DIAMETER | BACK DIAMETER |
|-----------|---------|------------|-----------|-----------|---------|-------------|-----------|----------------|---------------|---------------|
| Button | 533-121 | 7/16" | x | x | | | | 1 | 0.60" | 2.0" |
| Button | 533-131 | 7/16" | | x | x | x | | 1 | 0.70" | 2.0" |
| Button | 533-141 | 7/16" | | | x | | x | 1 | 0.93" | 2.1" |
| Button | 544-131 | 1/2" | | x | x | x | x | 1 | 0.70" | 2.1" |
| Button | 544-141 | 1/2" | | | x | | x | 1 | 0.93" | 2.1" |
| Button | 545-141 | 9/16" | | | x | | x | 1 | 0.93" | 2.25" |

PLASTIC SPLITTING HEADS

| CABLE END | PART # | CABLE SIZE | 3/4" PLASTIC | 1" PLASTIC | 1.25" PLASTIC | 1.5" PLASTIC | 2" PLASTIC | CUTTING BLADES | NOSE DIAMETER | BACK DIAMETER |
|-----------|---------|-------------|--------------|------------|---------------|--------------|------------|----------------|---------------|---------------|
| Button | 533-331 | 7/16" | x | | | | | 3 | 0.64" | 2.0" |
| Button | 533-341 | 7/16" | | x | x | | | 3 | 0.83" | 2.0" |
| Button | 544-331 | 1/2" | x | | | | | 3 | 0.64" | 2.1" |
| Button | 544-341 | 1/2" | | x | x | | | 3 | 0.83" | 2.1" |
| Button | 546-342 | 9/16", 5/8" | | x | | | | 3 | 0.83" | 2.5" |
| Button | 546-343 | 9/16", 5/8" | | x | | | | 3 | 0.83" | 3.0" |
| Button | 546-344 | 9/16", 5/8" | | x | | | | 3 | 0.83" | 3.5" |
| Button | 546-345 | 9/16", 5/8" | | x | | | | 3 | 0.83" | 4.0" |
| Button | 546-351 | 9/16", 5/8" | | | x | | | 3 | 1.025" | 2.5" |
| Button | 546-352 | 9/16", 5/8" | | | x | | | 3 | 1.025" | 3.0" |
| Button | 546-361 | 9/16", 5/8" | | | | x | | 3 | 1.21" | 2.5" |
| Button | 546-362 | 9/16", 5/8" | | | | x | | 3 | 1.21" | 3.0" |
| Button | 546-371 | 9/16", 5/8" | | | | | x | 3 | 1.55" | 3.0" |
| Button | 546-372 | 9/16", 5/8" | | | | | x | 3 | 1.55" | 3.5" |

LEAD, COPPER, AND GALVANIZED PULLING HEADS

| CABLE END | PART # | CABLE SIZE | 5/8" LEAD | 3/4" LEAD | 1" LEAD | 3/4" COPPER | 1" COPPER | 3/4" GALVANIZED | 1" GALVANIZED | BACK DIAMETER |
|-----------|---------|------------|-----------|-----------|---------|-------------|-----------|-----------------|---------------|---------------|
| Button | 533-081 | 7/16" | x | x | x | x | x | x | x | 2.0" |
| Button | 544-081 | 1/2" | | x | x | x | x | x | x | 2.1" |
| Button | 545-081 | 9/16" | | | x | | x | | x | 2.25" |

